

LEASEHOLD



Apartment

# ICON TOWER PORTAL WAY, ACTON, W3 6DU

Offers over

£550,000

## FEATURES

- 24 hr Concierge
- 2 minute walk to North Acton station
- Co Working Space
- Private Roof Terrace
- Residents Gym
- 8 minute walk to Acton Maine Line station
- On Site Restaurant and Café
- Underfloor Heating



**BELMONT**  
INTERNATIONAL

# 2 Bedroom Apartment located in Acton

Call us on

02087852025

info@belmontlondon.com  
belmontlondon.com

Stunning two-bedroom apartment for sale on the 18th floor of this landmark new development, offering views across London.

This impressive apartment features a bright open-plan living and kitchen area with floor-to-ceiling windows, creating a light-filled space ideal for modern city living. The property is offered furnished and finished to a high specification throughout.

Residents benefit from a 24-hour concierge service and access to premium lifestyle facilities including a fully equipped gym, wellbeing suite, co-working space, communal terraces, and an on-site restaurant and café.

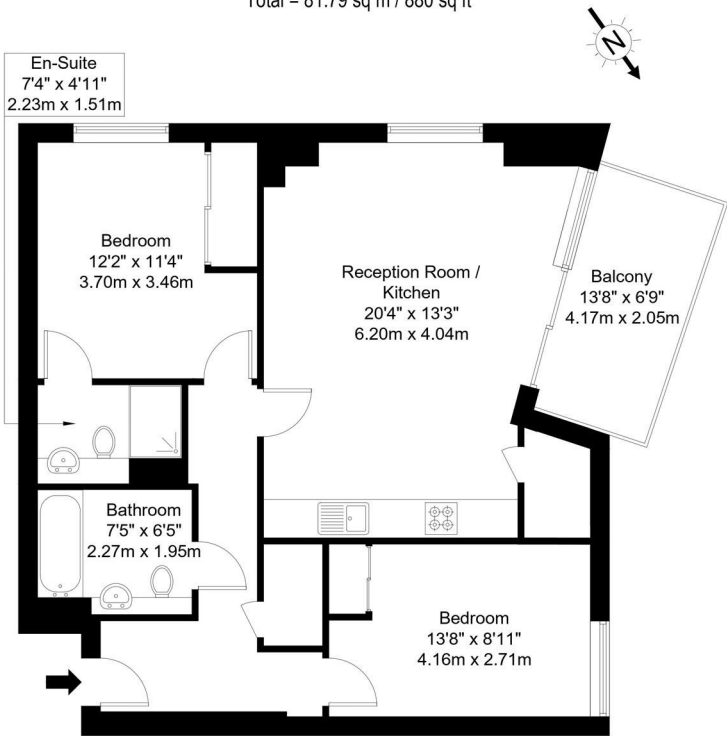
Council Tax Band  
New Build

## Portal Way, W3 6DU

Approx Gross Internal Area = 73.24 sq m / 788 sq ft

Balcony = 8.55 sq m / 92 sq ft

Total = 81.79 sq m / 880 sq ft



Nineteenth Floor

Energy Efficiency Rating		
	Current	Potential
Very energy efficient - lower running costs		
(92 plus) A		
(81-91) B		
(69-80) C		
(55-68) D		
(39-54) E		
(21-38) F		
(1-20) G		
Not energy efficient - higher running costs		
England & Wales		EU Directive 2002/91/EC

Agents Note: Whilst every care has been taken to prepare these particulars, they are for guidance purposes only. All measurements are approximate and are for general guidance purposes only and whilst every care has been taken to ensure their accuracy, they should not be relied upon and potential buyers are advised to recheck the measurements.